

CTC-CK SBRS OT TIERED SERVICES

BACKGROUND

What is under the School-Based OT Umbrella?

- Pre-Printing/Printing Skills, Fine Motor Skills, Visual Perception Skills, Executive Functioning, Sensory Skills, Assistive Technology, Accessibility Equipment, Self-Care

TIER 1 - UNIVERSAL SERVICES

- Provision of universal strategies, education and resources, which are shared with the education team.
- The teacher will observe and monitor student progress and note which students may benefit from additional supports. No intervention provided to specific students at this level.

TIER 1 AVAILABLE TOPICS

Fine Motor: Pencil grasp, pencil grips, pencil pressure, hand strengthening

Scissor Skills: Scissor grasp and set-up, paper manipulation, adaptive scissors

Pre-Printing/Printing: Drawing, colouring, printing organization, reversals, cursive

Sensory Regulation: Environmental modifications, universal sensory strategies

Executive Functioning: Time management, organization of materials, task initiation

Visual Perception: Copying from the board, letter formation, scanning

Self-Care Skills: Buttons, zippers, shoes, managing food packages

Classroom Skills: Proper desk height, sitting posture, alternative seating

TIER 1 SUPPORTS AVAILABLE



Type 1: Consult

Education and resource sharing through handouts, videos, work sheets etc.



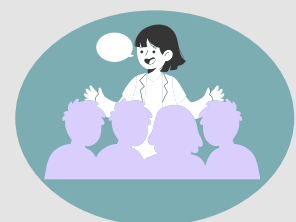
Type 2: Observation

Classroom observation to provide strategies or make recommendations



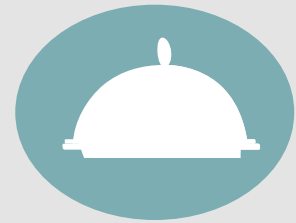
Type 3: Activity Centre

OT or OTA can provide activity centres in the classroom that any student can participate in



Type 4: Class Instruction

OT or OTA can provide a whole class learning opportunity on a particular topic



Type 5: Lunch & Learn

OT can provide a lunch and learn on a requested topic for any interested staff

HOW CAN I REFER?

- The teacher must contact the LRT / OT to schedule a time for Tier 1 services and these will be prioritized based on school needs
- The teacher is required to be present within the classroom to participate in Tier 1 services
- The teacher must select a topic area, and the type of support required
- Only one topic and support type can be selected per OT visit
- A reverse consent letter has been sent to all school boards to share with families to inform them of Tier 1 services

CTC-CK SBRS OT TIERED SERVICES

TIER 2- TARGETED SERVICES

- OT provides support to specific students during activities in the classroom, in one-to-one or small group formats.
- These targeted services are for students experiencing challenges, when universal strategies and/or environmental modifications have already been put in place.

TIER 3- INDIVIDUALIZED SERVICES

- OT provides support to students who require very specific services to safely and effectively access and participate in their school curriculum.

TIER 2 AND 3 REFERRAL

- Resource teachers and classroom teachers are required to prioritize SBRS OT needs within their school
- When there is a FUNCTIONAL concern, school staff must consult with OT before completing referral paperwork
- The OT will approve the referral and assign a Tier 2 or 3 priority ranking
- Staff complete the Principal Referral Form, Teacher Checklist, and include a sample of written work and relevant reports (i.e., psych-ed assessment), if appropriate
- Caregiver consent is required at both Tier 2 and 3 services

WHEN IS A REFERRAL NOT APPROPRIATE?

- Assistive technology (classroom or SEA prescribed) and/or written accommodations are in place and successful
- Primary concern is:
 - Language-based (i.e., reading, spelling, dyslexia)
 - Behaviour-based
 - Mental health
 - Social-emotional
- Inconsistent student attendance that impacts service implementation
- Family requested the referral and there are no concerns from school staff
- Inconsistent concerns that do not impact day-to-day participation

